

Smartness Rebuilt

AT EAST POINT COLONY





GET **MORE** FOR LITTLE

Life at casuarina Hull offers you access to wide range of comforts and amenities and ofcourse easy access to major landmarks of city of destiny. Casuarina Hull offers you beauty of architecture along vasthu complaint to make it a happy place for better tomorrow.



CASUARINA
HULL

A woman with dark hair tied in a bun is sitting on a dark leather sofa. She is wearing a light blue t-shirt, a red plaid shirt tied around her waist, and blue jeans with a tear. She is holding a tablet computer and looking at the screen. The sofa is on a light-colored wooden floor. In the background, there is a white leather armchair and a wooden chair. The room is brightly lit with natural light from a window.

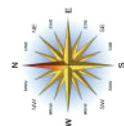
Love to Live

*Step into joy
of grandness
with scenic
beauty and a
luxury stay
with technical
values
upgraded.*

Architecture Redefined

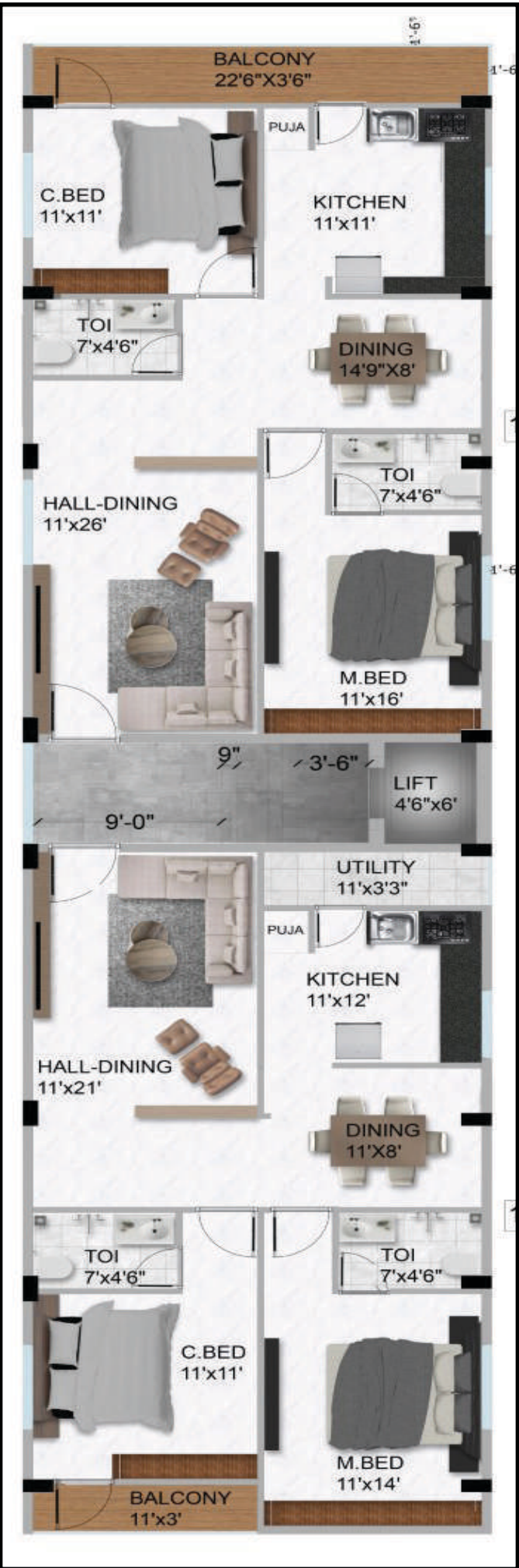


TYPICAL FLOOR PLAN

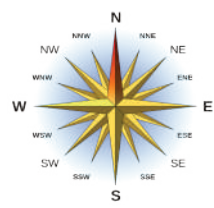


CONCEPT A

CONCEPT B



EAST FACING FLAT P L A N



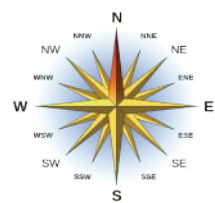
TYPE A - 1200 SFT



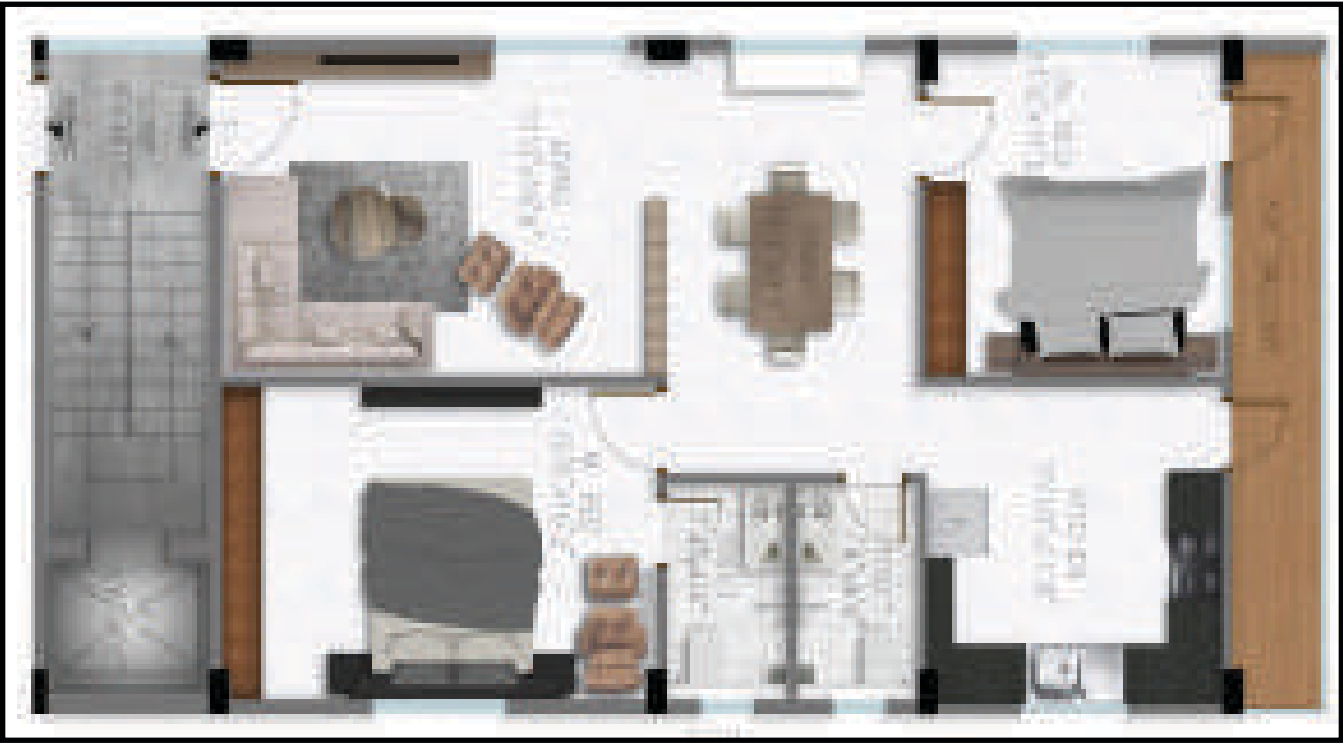
TYPE B - 1200 SFT



WEST FACING FLAT P L A N



TYPE A - 1200 SFT



TYPE B - 1200 SFT



Specifications



STRUCTURE: R.C.C. FRAMED STRUCTURE

SUPER STRUCTURE: BRICK MASONRY WITH CEMENT MORTAR (1:6) 6" THICK RED BRICK FOR EXTERNAL WALLS & 4" THICK RED BRICK FOR INTERNAL WALLS

PLASTERING: DOUBLE COATED PLASTERING WITH 20MM THICKNESS IN CM(1:4) FOR OUTSIDE AND INSIDE.

FENESTRATION:



MAIN DOOR: WITH TEAK WOOD OF 5"X4" SECTION WITH DESIGNER SHUTTER OF TEAK WOOD FIXED WITH SUPERIOR QUALITY OF SS HARDWARE ALONG WITH GODREJ SAFETY LOCKS.

INTERNAL DOORS: ALL INTERNAL FRAMES ARE PACKED WITH PVC AND PLYWOOD CLADDED WITH GRANITE OR VENEER AS PER CUSTOMER CHOICE AND ALL DOORS ARE OF WATER PROOF FLUSH DOORS STICKED WITH LAMINATES ON BOTH SIDES AND SOLID PVC DOORS FOR WASHROOMS.

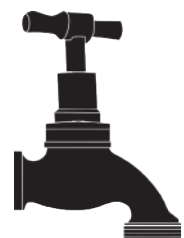


WINDOWS: ALL WINDOW FRAMES AND SHUTTERS SHALL BE UPVC MADE BY ASTRIX WITH SLIDING MOSQUITO MESH AND CLADDED WITH GRANITE.

GRILLS & HARDWARE: M.S POWDER COATED GRILLS FOR WINDOWS & STAINLESS STEEL RAILING FOR STEPS.

SS AND ALUMINIUM HARDWARE FIXTURES, ENTRANCE DOOR WITH NIGHT LATCH, OTHER DOORS WITH MORTISE LOCKS, MAGNETIC DOOR STOPPERS.

SANITARY & PLUMBING:



WATER CLOSET: WATER SAVING DUAL FLUSH CONCEALED CISTERN OF EUROPEAN MAKE & CP FITTINGS OF GROHE OR KOHLER MAKE

BATHROOMS: SANITARY FIXTURES OF EUROPEAN MAKE, PROVISION FOR GEYSERS SHALL BE GIVEN TO THE SHOWER IN ALL BATHROOMS.

FAUCETS: EUROPEAN MAKE

SHOWER CUBICALS: FRAMELESS GLASS SCREEN PARTITION IS PROVIDED FOR MASTER BED ROOM ONLY

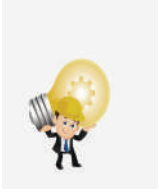


BATH ROOM ACCESSORIES: TOWEL RING, TOWEL RACKS, SOAP DISH PROVIDED IN ALL BATHROOMS

COAKROACH TRAP: A DETACHABLE SS TRAP WITH LID FOR ALL TOILETS AND UTILITY AREAS.

KITCHEN: PROVISION FOR RO SYSTEM

PLUMBING: ALL WATER SUPPLY LINES SHALL BE WITH CPVC PIPES, ALL DRAINAGE LINES SHALL BE WITH SWR PIPES.

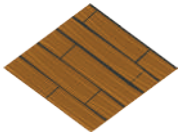


ELECTRICAL:

WIRING: CONCEALED CONDUIT WIRING WITH PVC INSULATED COPPER CABLES OF R.R MAKE FOR LIGHTS,FANS AND PLUG POINTS.SPLIT AC POINTS IN ALL BED ROOMS WITH COPPER CABLING WORK WITH MODULAR SWITCHES.CONTROLLED BY ELCB AND MCB.

SWITCHES: ALL SWITCHES SHALL BE PROVIDED WITH SCHNIDER OR GM MAKE. M.C.B'S: LEGRAND MAKE.

- A) DRAWING ROOM WITH PROVISION FOR ONE FAN POINT,TWO LIGHT POINTS,TWO 3-PIN SOCKETS,TV AND TELEPHONE POINTS.
- B) LIVING & DINING WILL BE PROVIDED WITH 2 FAN POINTS,ONE CHANDLEIR POINT,THREE LIGHT POINTS,TV AND TELEPHONE POINTS AND TWO 3-PIN 5 AMPS SOCKETS.
- C) BED ROOMS WILL BE P[ROVIDED WITH ONE FAN POINT, TWO LIGHT POINTS,TV AND TELEPHONE POINTS,TWO 3-PIN 5 AMPS SWITCH & SOCKETS,AND SPLIT A/C PROVI-SIONS.
- D) KITCHEN SHALL BE PROVIDED WITH 5 AMPS POINTS FOR CHIMNEYS/AQUAGAURD AND 15 AMPS SWITCH & SOCKET SHALL BE PROVIDED FOR ANY OTHER NECESSARY AP-PLIANCES.
- E) COMMON POINTS INCLUDE 15 AMPS SWITCH & SOCKET FOR WASHING MACHINE IN UTILITY AREA AND FRIDGE IN DINING AREA, TWO LIGHT POINTS AND FAN POINT IN ALL BALCONIES



FLOORING & DADOING

VITRIFIED TILES OF SIZE 3'X3' IN LIVING,DINING AND BED ROOMS AND TILES OF 2'X2' SIZE TILES FOR KITCHEN AND UTILITY AND 1'X1' ANTI SKID TILES FOR WASH ROOMS.

DADOING UPTO WINDOW LEVEL FOR KITCHEN AND UPTO ROOF LEVEL FOR ALL WASH-ROOMS AND UPTO 3 ' HEIGHT IN UTILITY AREAS.

EXHAUST SYSTEM: EXHAUST FANS SHALL BE PROVIDED IN KITCHEN AND WASHROOMS.



SAFETY AND SECURITY: VIDEO DOOR PHONE FOR EACH UNIT CONNECTED TO THEIR PARTICULAR DOOR.

FINISHES:

INTERIOR PAINTS: ALL INTERNAL PAINTS ARE OF ASIAN MAKE PREMIUM EMULSIONS WITH LOW VOC CONTENT THEREBY REDUCING TOXIC EMISSIONS.

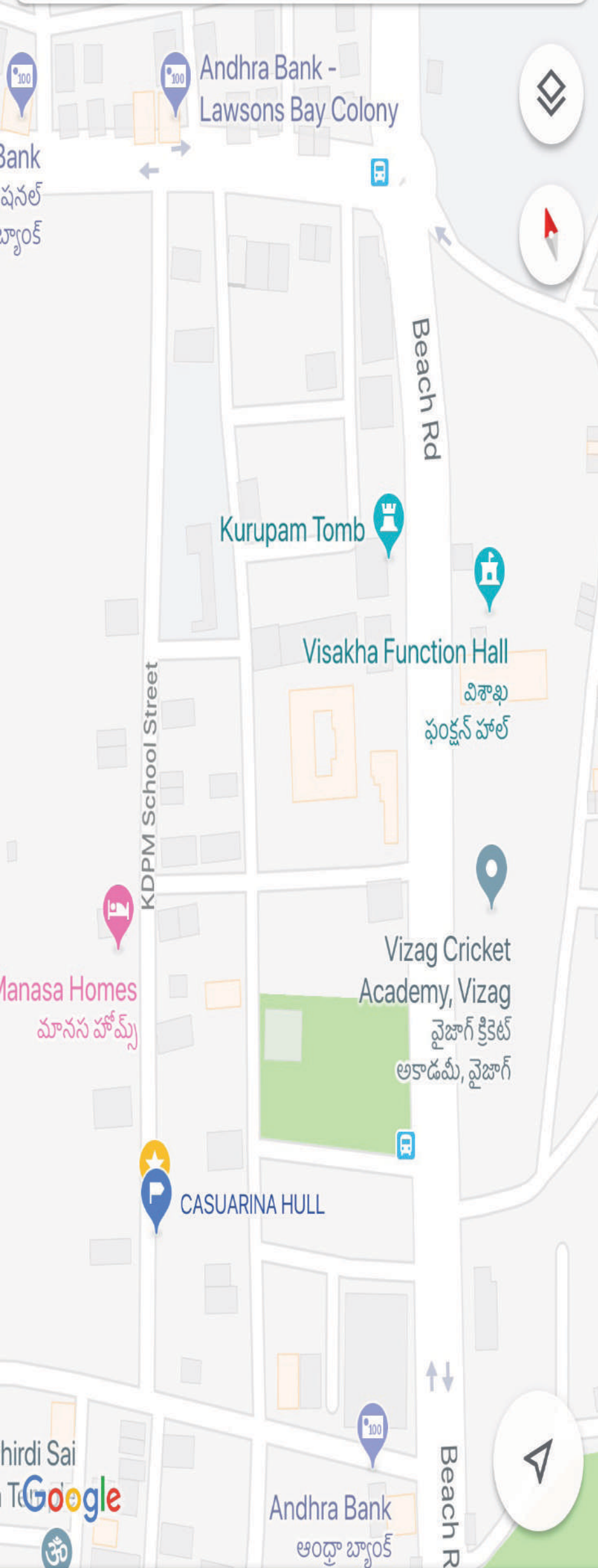
EXTERNAL PAINTS: ASIAN PAINTS APEX ULTIMA FOR ALL EXTERIOR WALLS.

PUTTY: ALL WALLS APPLIED WITH 2 COATS BIRLA WALL CARE PUTTY AND APPLIED WITH INTERIOR AND EXTERIOR PRIMERS AFTER THE WALLS ARE DULY SCRAPPED WITH STONE PAPER.





Casuarina hull has its advantage as builders have spell bounded experience of around 7 years .All of their previous projects are built in prime localities which stand out for latest designs ,quality and aesthetics trends in construction technology , quality material and attention to detail mark all their ventures. A flat in casuarina hull is a great investment proposition and an excellent option to live a happy life.



PROMOTERS

living
bx

MIG -105 , BESIDE D MART ,
NEAR NH - 5 , MADHURAWADA
PH - 9550313231

ARCHITECTS

VK INNOVATIVE ARCH
AR KATTA VAMSI KRISHNA
B ARCH, M ARCH (London)
Coa,IIA,IID
Ph -9949730313

AMENITIES:

- HOME AUTOMATION
- OUTDOOR SURVEILLANCE CAMERAS
- INTERCOM FACILITY
- COMPLETE POWER BACK GENERATOR
- GYPSUM CEILING FOR ALL FLATS AND CORRIDORS
- SOLAR HOT WATER FACILITY
- WATER SOFTNER
- 6 PASSENGER CAPACITY LIFT WITH GLASS DOORS
- ELECTRICAL METER CONNECTION
- UNDERGROUND BULK WATER SUPPLY

Note: This brochure is only conceptual presentation of the project and not a legal offering .The promoters reserve the right to alter and make changes in elevation , specifications and plan as deemed fit.